

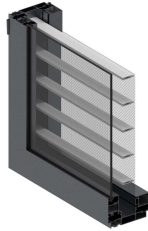


SCHÜCO

Schueco AW 40.NI  
High performance window system



Side-hung, double-vent and top-hung



Typical section with grill and flymesh shutter



View from outside

## Schueco AW 40.NI

High performance window system

Whether requirements are residential or commercial, both will find a great answer in the outward-opening Schueco TropTec™ AW 40.NI (non-insulated) aluminium window system. The system facilitates a rich variety of designs with a manageable amount of profiles. Due to the different available opening types as side-hung, projected side-hung, projected top-hung and double-vent window (SH/SH), the system is suitable for private homes as well as commercial buildings. The solution of integrated grill and flymesh within the same system strikes a perfect balance between aesthetics, performance, functionality and safety.

### Wide choice of typologies

Enjoy a virtually unlimited range of window system solutions that may be implemented. Thanks to the rich variety of outward opening options including projected side hung, side hung, projected top hung, double vent and bay window.

### Night ventilation

Experience fresh air inside the home while the window remains locked and secure, with the provision of dual-mode locking.

### Enhanced safety

Stay indoors with peace of mind thanks to the integrated safety-grills that provide additional safety against intruders.

### Integrated flymesh shutter

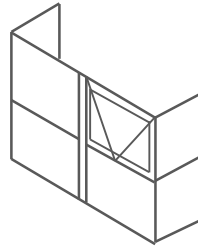
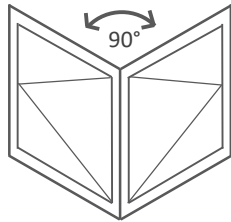
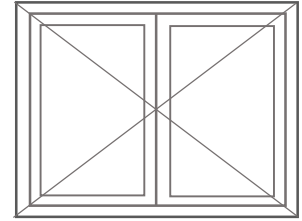
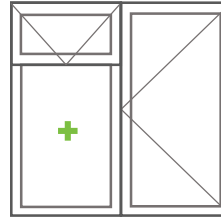
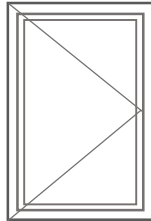
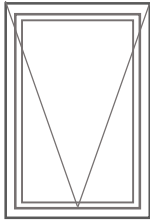
Enjoy complete ventilation with fresh air coming inside the home while keeping the bugs out thanks to the seamlessly integrated mesh shutter.

### Wide range of application

Suited to a wide range of applications such as villas, and multi-storey buildings in both the residential and commercial sector. With a combination of high wind load resistance of up to 2500 Pa and high water-tightness of 600 Pa.

## Design typology

Side hung & top hung



## System data

**Max. 1000mm**  
Vent width (SH)

**Max. 2400 mm**  
Vent height (SH)

**Up to 80 kg**  
Vent weight (SH)

**4 – 26 mm**  
Glass thickness

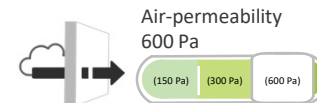
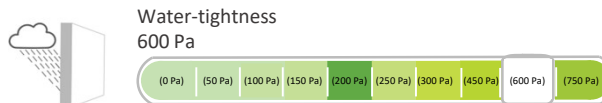
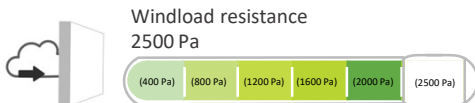
**Min. 74mm**  
Face width

**Max. 1500mm**  
Vent width (TH)

**Max. 1900 mm**  
Vent height (TH)

**Up to 100 kg**  
Vent weight (TH)

## Schueco certified performance



# The Schueco advantage

An integrated design, materials and service approach to deliver the highest global standards to your home



## Design rigor & philosophy

Each system from Schueco brings 70 years of global experience in structural detailing and design innovation.



## High-performance materials & processes

High-EPDM-content gasket with peroxide curing technology, integrated drainage system, and custom brush seal, all contribute to best-in-class air, water, wind and acoustic performance.



## Accessory specifications & testing

Engineered, high-quality materials designed for smooth operation, corrosion resistance and durability with meticulous testing of all components, ensure consistent long-term performance.



## Last-mile training and support

Schueco provides in-depth technical and hands-on training to the fabricator partners and certify them to deliver outstanding buildings.

## Schueco - System solutions for windows, doors and façades

Schueco products are extensively used all over the world and meet the highest requirements of design, comfort, security and energy efficiency. Headquartered in Bielefeld, the Schueco Group has more than 6,330 employees worldwide and strives to be the industry leader in terms of technology and service today and in the future. The company is active in more than 80 countries and works together with over 40,000 fabricators, developers, architects and investors.



SCAN ME

### Registered office, Mumbai

Schueco India Private Limited  
WeWork Chromium, Office No. 01A104,  
JVLR, Raje Sambhaji Nagar, Andheri (East),  
Mumbai, Maharashtra - 400 076  
Phone: +91 22 678 689 89

### Regional office, Bangalore

Schueco India Private Limited  
Unit No.201, August Center BBMP Khatha No.  
937/138 & 139/3B/1 Kempe Gowda International  
Airport Road, Yelahanka, Bangalore - 560 064  
Phone: +91 80 666 989 89

### Regional office, New Delhi

Schueco India Private Limited  
Office number 318, Tower B DLF Towers,  
Jasola, New Delhi - 110 025  
Phone: +91 11 694 089 89