

SCHÜCO

**Schueco ADS 50.NI**  
Door system for interior application





Door with self-raising threshold

## Schueco ADS 50.NI

Door system for interior application

Transform your interiors with grace. The Schueco ADS 50.NI non-insulated aluminium door system is designed especially with narrow face widths and a small basic depth of 50 mm. Thanks to its stable construction, floor-to-ceiling units can be reliably implemented, guaranteeing a variety of possible uses from door constructions and partition walls to lobby and reception areas.

### Transparency

Enjoy more transparency from one side to the other, with the possibility of 3m tall door and proportionally narrow frames.

### Flush threshold

Experience barrier-free movement between rooms. The option of flush threshold provides a seamless transition between the inside and outside.

### Numerous design variants

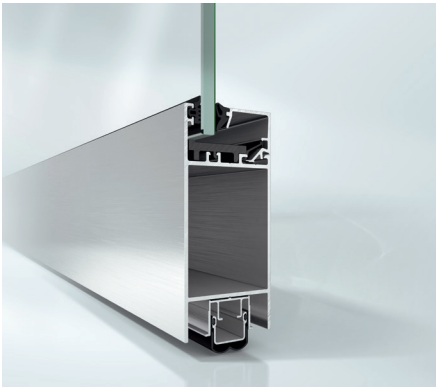
Depending on your home's needs, choose from single and double-leaf inward and outward-opening doors, emergency doors, anti-finger-trap doors, swing doors and all-glass doors.

### Multiple hinge options

The requirements of large project doors, such as stability and durability, are fulfilled by the Schueco barrel and surface-mounted hinges. An elegant design and clean lines are assured by a concealed door hinge option.

### Burglar resistance

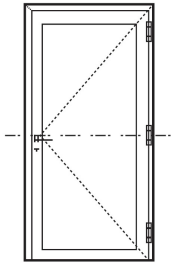
This system offers burglar resistance up to Class WK2 giving you peace of mind against theft.



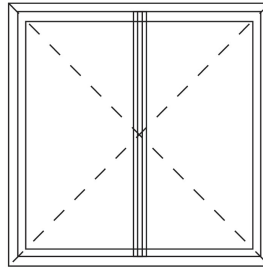
Bottom detail, vent

## Design typology

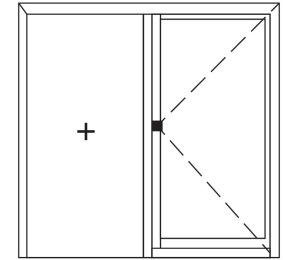
Casement door



Single leaf



Double leaf



Fixed lite integration

## System data

**50 mm**  
Basic depth

**Max. 1400 mm**  
Vent width

**Max. 3000 mm**  
Vent height

**Max. 200 kg**  
Vent weight

**4- 40 mm**  
Glass thickness

## Schueco performance



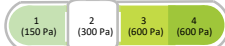
Windload resistance  
Class C3- 1200 Pa



Water-tightness  
Class 3A- 100 Pa



Air-permeability  
Class 2- 300 Pa



## The Schueco advantage

An integrated design, materials and service approach to deliver the highest global standards to your home



### Design rigor & philosophy

Each system from Schueco brings 70 years of global experience in structural detailing and design innovation.



### High-performance materials & processes

High-EPDM-content gasket with peroxide curing technology, integrated drainage system, and custom brush seal, all contribute to best-in-class air, water, wind and acoustic performance.



### Accessory specifications & testing

Engineered, high-quality materials designed for smooth operation, corrosion resistance and durability with meticulous testing of all components, ensure consistent long-term performance.



### Last-mile training and support

Schueco provides in-depth technical and hands-on training to the fabricator partners and certify them to deliver outstanding buildings.

## Schueco - System solutions for windows, doors and façades

Schueco products are extensively used all over the world and meet the highest requirements of design, comfort, security and energy efficiency. Headquartered in Bielefeld, the Schueco Group has more than 6,330 employees worldwide and strives to be the industry leader in terms of technology and service today and in the future. The company is active in more than 80 countries and works together with over 40,000 fabricators, developers, architects and investors.



### Registered office, Mumbai

Schueco India Private Limited  
WeWork Chromium, Office No. 01A104,  
JVLR, Raje Sambhaji Nagar, Andheri (East),  
Mumbai, Maharashtra - 400 076  
Phone: +91 22 678 689 89

### Regional office, Bangalore

Schueco India Private Limited  
Unit No.201, August Center BBMP Khatha No.  
937/138 & 139/3B/1 Kempe Gowda International  
Airport Road, Yelahanka, Bangalore - 560 064  
Phone: +91 80 666 989 89

### Regional office, New Delhi

Schueco India Private Limited  
Office number 318, Tower B DLF Towers,  
Jasola, New Delhi - 110 025  
Phone: +91 11 694 089 89